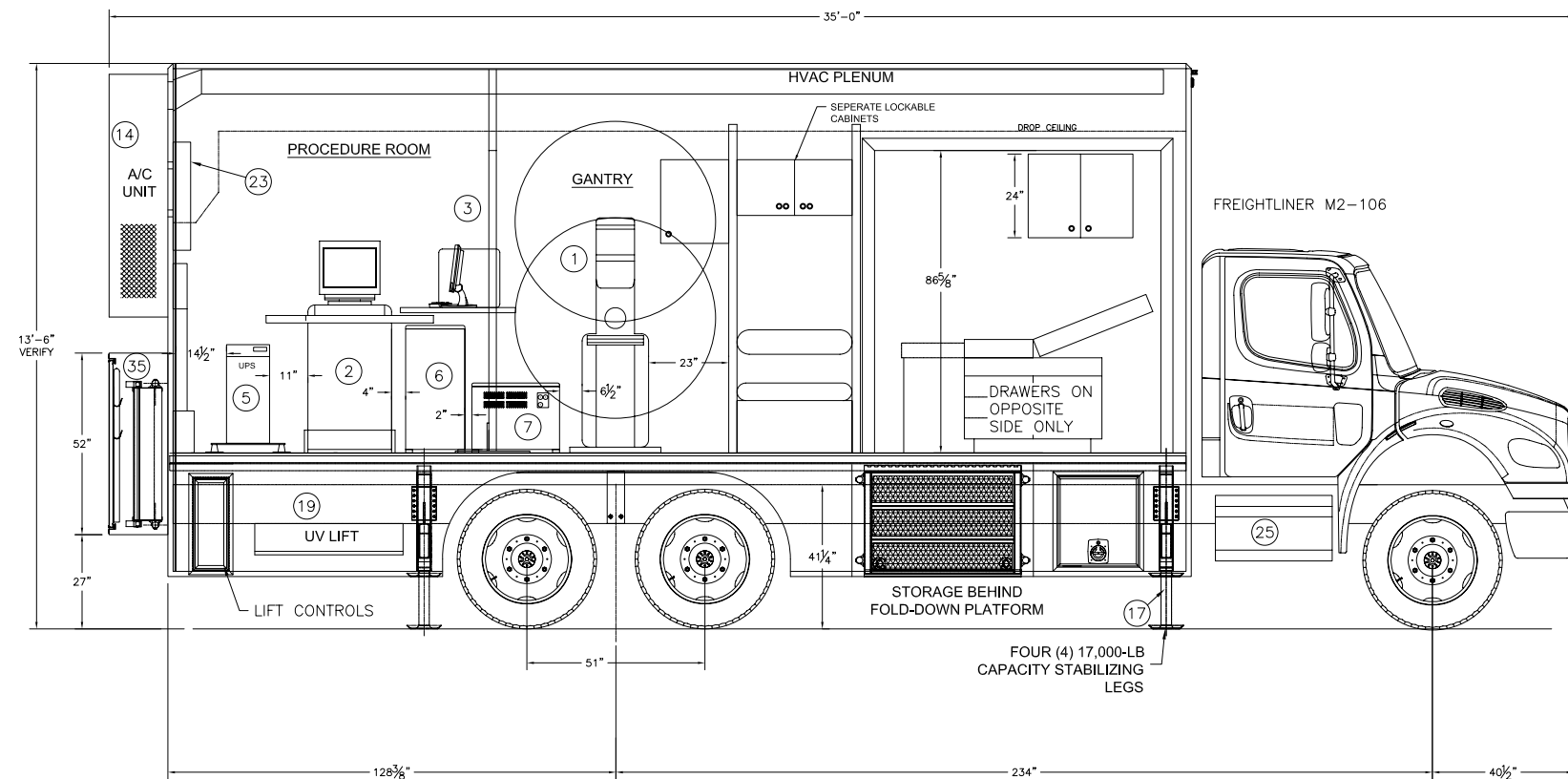
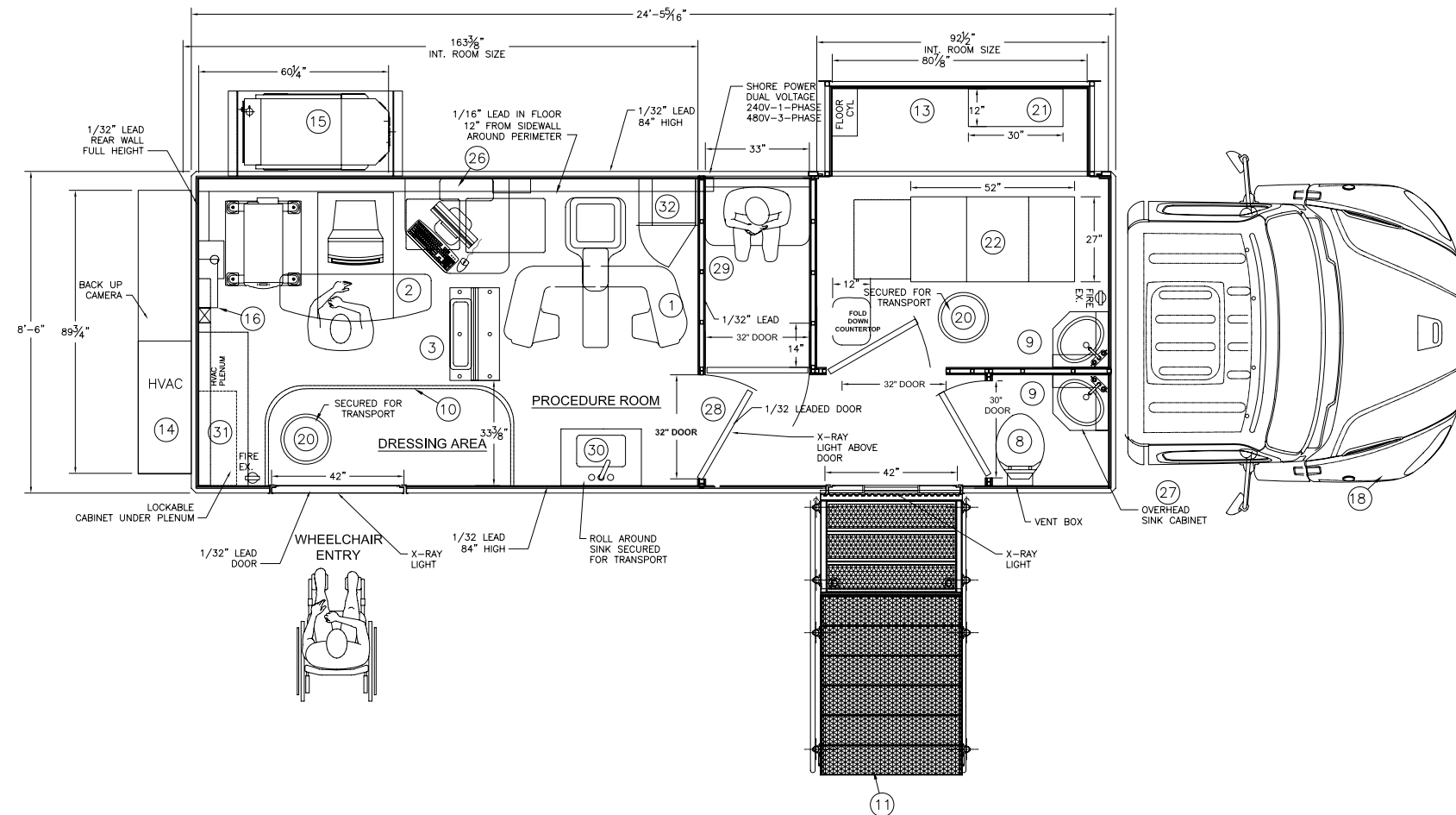


REVISIONS					
REV.	REV. DATE	CHK. BY	CHK. DATE	ENG.	DESCRIPTION
06	09/12/06	W.J.	09/12/06	TP	UPDATED AS-BUILT LAYOUT



IT NO.	QTY.	DESCRIPTION
1	1	GANTRY WITH DIGITAL DETECTOR (20000 FFDM)
2	1	MONITOR CART
3	1	RADIATION SHIELD & CONTROL CONSOLE
4		
5	1	UPS (12.5 KVA)
6	1	XRAY GENERATOR CABINET
7	1	CONDITIONER CABINET
8	1	TOILET
9	2	SINKS CORNER UNITS
10	1	CURTAINS
11	1	STAIRS/PLATFORM
12	1	SHORE POWER CABLE, 50-FT (NOT SHOWN)
13	1	SLIDEOUT WALL SECTION
14	1	3-TON, AIR CONDITIONER WITH 9-KW HEAT
15	1	20-KW KOBUTA INDUSTRIAL GENERATOR V2203-BG
16	1	LOAD CENTER, 240-VAC, 1-PHASE
17	1	HYDRAULIC LEVELING LEGS (17,000 LB. CAP. EA.)
18	1	FREIGHTLINER, M2-106 CLASS 234" WHEELBASE
19	1	WHEEL CHAIR LIFT, CASSETTE STYLE
20	2	ROLL AROUND STOOL
21	1	24" x 30" x 12" OVERHEAD CABINET (SLIDE-OUT)
22	1	EXAM TABLE - RITTER EXAM TABLE #104-037-200
23	1	HONEYWELL HUMIDIFIER, HE520 OR EQUIV.
24	1	FIRE DETECTION SYSTEM (OPTION) NOT SHOWN
25	2	FUEL TANK, 1 AUX. 45-GAL GEN. RUN TIME APPROX. 10 HRS
26	1	STEREO BOX
27	2	OVERHEAD SINK CABINETS
28	1	LEADED DOOR
29	1	PATIENT GOWNED WAITING AREA
30	1	PORTABLE ROLL AROUND SINK
31	2	LOCKABLE STORAGE CABINETS (UNDER PLENUM)
32	1	STORAGE CABINETS IN GANTRY AREA
33	1	INTERCOM SYSTEM (NOT SHOWN)
34	1	INTRUSION ALARM (NOT SHOWN)
35	1	STAIR COMPARTMENT REAR BOX

THIS DRAWING IS PROVIDED ON A CONFIDENTIAL BASIS SUBJECT TO RETURN ON DEMAND OF OSHKOSH SPECIALTY VEHICLES ("OSHKOSH"), WHICH RETAINS ANY AND ALL RIGHTS ASSOCIATED WITH IT AND THE ARTICLE OR ARTICLES IT REPRESENTS. DISCLOSURE, REPRODUCTION OR ALTERATION OF ANY PART OF THIS DRAWING, OR MANUFACTURE, USE OR SALE OF THE ARTICLE OR ARTICLES REPRESENTED, IS PROHIBITED WITHOUT THE PRIOR WRITTEN AUTHORIZATION OF OSHKOSH. © OSHKOSH SPECIALTY VEHICLES (unpublished).

SHEET NUMBER: 1 OF 1	REFERENCE DRAWING:	TITLE: GENERAL LAYOUT GE MEDICAL SYSTEMS SEMOGRAPHIE 2000 D mAMMOGRAPHY UNIT 8'-6" X 13'-6" X 35'-0" TRUCK	DATE: 24JUN04	SCALE: 1/2"=1'-0"
JOB#	OSHKOSH SPECIALTY VEHICLES		16745 S. LATHROP AVENUE HARVEY, IL. 60426 PHONE: (708) 596-5066 FAX: (708) 596-2480	CHECKED BY: DRAWING NUMBER: 10274-A01