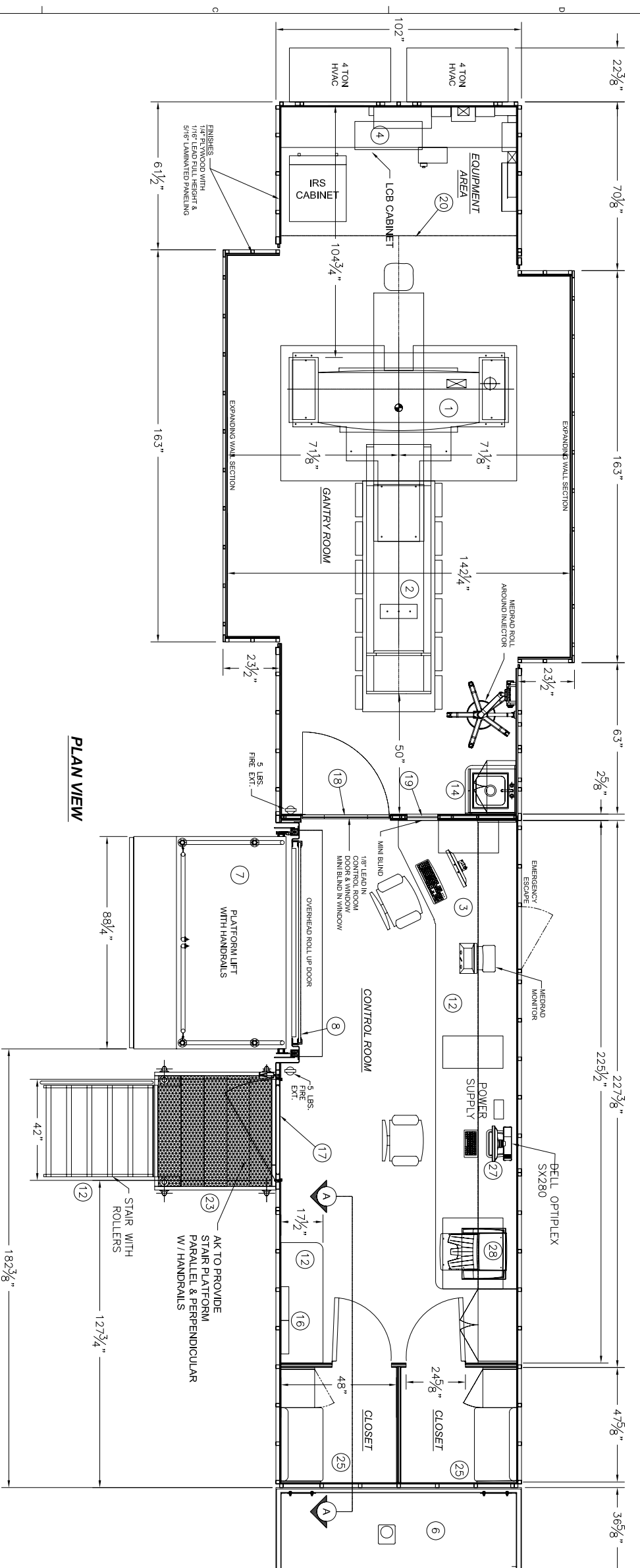
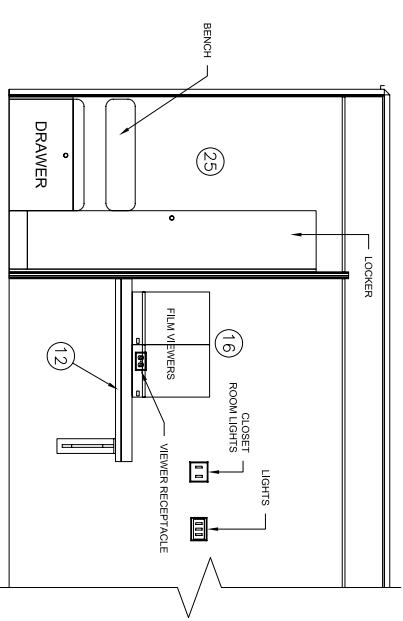


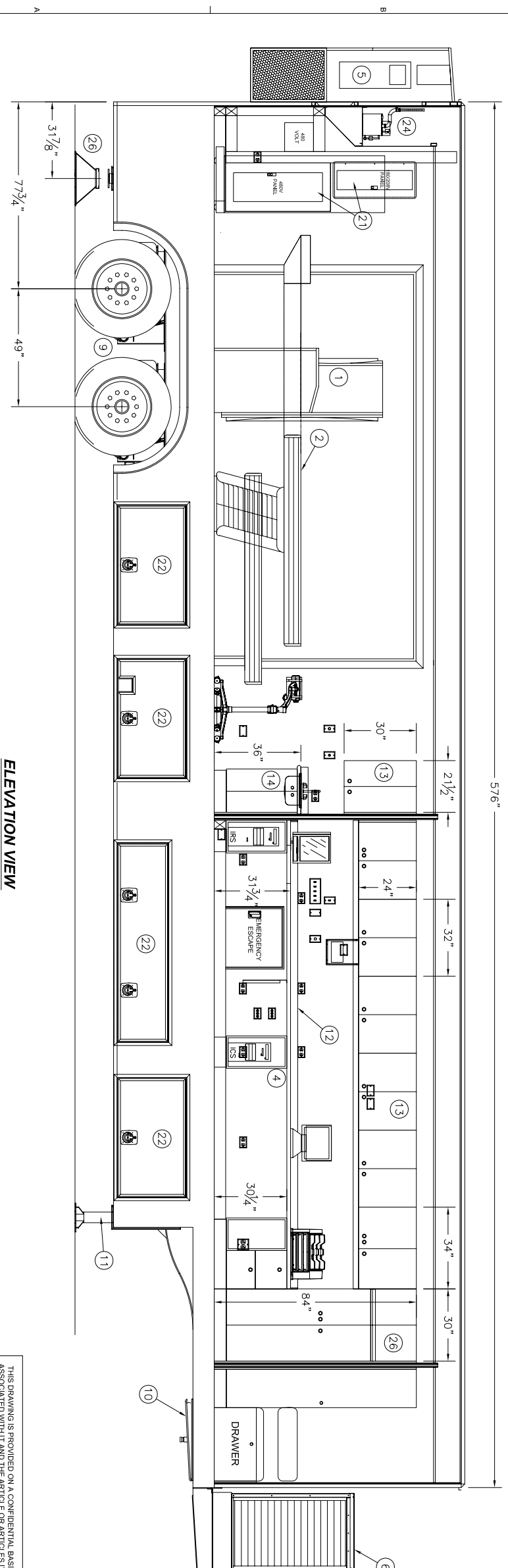
REV.	REV. DATE	CHK. BY	CHK. DATE	ENG.	REVISIONS	DESCRIPTION
00						



PLAN VIEW



SECTION A-A



ELEVATION VIEW

ITEM	QTY	PART NUMBER	DESCRIPTION
28	1		CONDONICS PRINTER
27	1		DELL OPTIPLEX SX280
26	2		STABILIZING STAND
25	2		CLOSETS
24	2		HUMIDIFIER
23	1		PLATFORM PARALLEL & PERPENDICULAR
22	9		LOWER COMPARTMENT DOORS (4-PS / 5-DS)
21	2		ELECTRICAL SERVICE PANELS (1-480V / 1-208V)
20	1		CURTAIN
19	1		16" x 24" LEADED WINDOW
18	1		34" x 80" LEADED DOOR w/ 16" x 24" LEADED WINDOW
17	1		42" x 80" ENTRY DOOR
16	2		VIEWER
15	1		FULL HEIGHT STORAGE CABINET
14	1		SINK CABINET
13	2		OVERHEAD CABINETS
12	2		WORK COUNTER
11	2		HYDRAULIC LEVELING LEGS, 32,000 LB. CAP.
10	1		AIR RIDE UPPER COUPLER (KING PIN)
9	1		AIR RIDE SUSPENSION, 34,000 LB CAP
8	1		ROLL-DOOR, 6'-6" x 6'-6"
7	1		LIFT 88-1/4" WIDE ALUMINUM PLATFORM
6	1		100KW DIESEL GENERATOR
5	2		48,000 BTU AIR CONDITIONER
4	1		LINCE CONNECTION BOX (LCB)
3	1		OPERATOR CONSOLE
2	1		PATIENT TABLE
1	1		SIEMENS EMOTION GANTRY

BILL OF MATERIALS

THIS DRAWING IS PROVIDED ON A CONFIDENTIAL BASIS SUBJECT TO RETURN ON DEMAND OF OSHKOSH SPECIALTY VEHICLES ("OSHKOSH"), WHICH RETAINS ALL RIGHTS ASSOCIATED WITH IT AND THE ARTICLE OR ARTICLES IT REPRESENTS. DISCLOSURE, REPRODUCTION OR ALTERATION OF ANY PART OF THIS DRAWING OR MANUFACTURE, USE OR SALE OF THE ARTICLE OR ARTICLES REPRESENTED IS PROHIBITED WITHOUT THE PRIOR WRITTEN AUTHORIZATION OF OSHKOSH. © OSHKOSH SPECIALTY VEHICLES (unpublished).

SHEET NUMBER: SHEET 1 OF 1
REFERENCE DRAWING: TITLE: NONE
JOB#: OSHKOSH SPECIALTY VEHICLES

GENERAL LAYOUT
SIEMENS CT EMOTION MOBILE
8'-6" X 13'-6" X 48'-0" TRAILER

DATE: 28JUN06
SCALE: 1/2"=1'-0"
DRAWN BY: JL
CHECKED BY:
DRAWING NUMBER: 10283-A01

16745 S. LATHROP AVENUE
HARVEY, IL 60426
PHONE: (708) 596-5066
FAX: (708) 596-2480