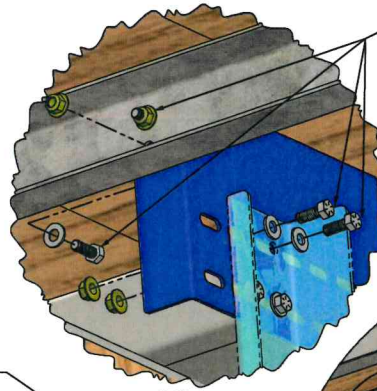
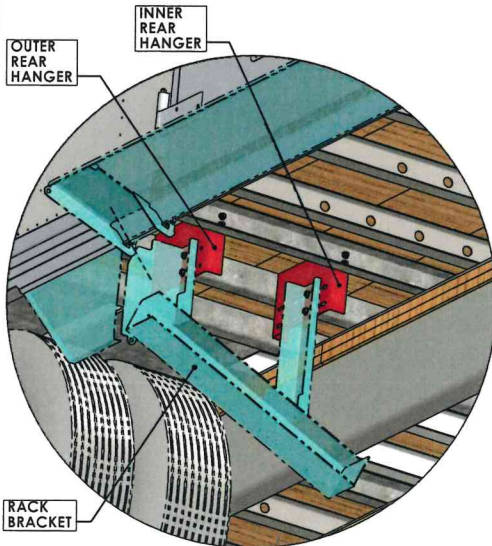


1. LIFT AND SECURE THE ACCESS DOOR IN THE OPEN POSITION.
2. REMOVE THE WALK BOARD FROM THE RACK AND SET ASIDE.
3. TO PREVENT SHIFTING OF THE RACK, DO NOT REMOVE ALL OF THE FASTENERS AT ONCE. REMOVE AND REPLACE HALF OF THE FASTENERS IN EACH LOCATION, TORQUE TO SPECIFICATION (37-42 ft-lbs). THEN REMOVE AND REPLACE THE REMAINING FASTENERS AND TORQUE TO SPECIFICATION (37-42 ft-lbs). IN TOTAL, (28) FASTENERS SHOULD BE REMOVED AND REPLACED.
4. MARK EACH REPLACED FASTENER WITH A PAINT MARKER, IN A VISIBLE LOCATION, TO INDICATE IT HAS BEEN REPLACED AND TORQUED (SEE MARKING A TORQUED ITEM).
5. RE-INSTALL THE WALK BOARD IN THE RACK.
6. LOWER THE ACCESS DOOR AND SECURE WALK BOARD AND DOOR FOR TRANSPORT.



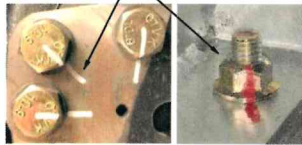
REMOVE AND REPLACE THE FASTENERS CONNECTING THE HANGERS TO THE CROSSMEMBERS AS WELL AS THE FASTENERS CONNECTING THE RACK BRACKETS TO THE HANGERS.



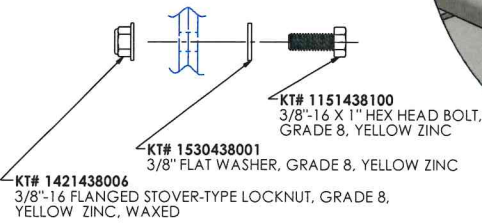
REAR WALK BOARD RACK HANGER

- (4) FASTENERS IN OUTER REAR HANGER
- (4) FASTENERS IN INNER REAR HANGER
- (8) FASTENERS IN RACK BRACKET, (4) PER VERTICAL

MARKING A TORQUED ITEM

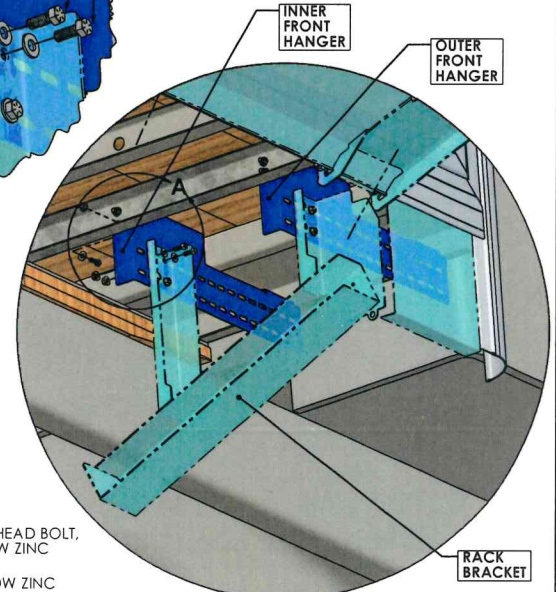


DETAIL A



NOTES:

1. WASHER TO BE INSTALLED UNDER BOLT HEAD
2. TORQUE BOLT HEAD OR NUT TO 37-42 FT/LBS.



FRONT WALK BOARD RACK HANGER

- (2) FASTENERS IN OUTER FRONT HANGER
- (2) FASTENERS IN INNER FRONT HANGER
- (8) FASTENERS IN RACK BRACKET, (4) PER VERTICAL